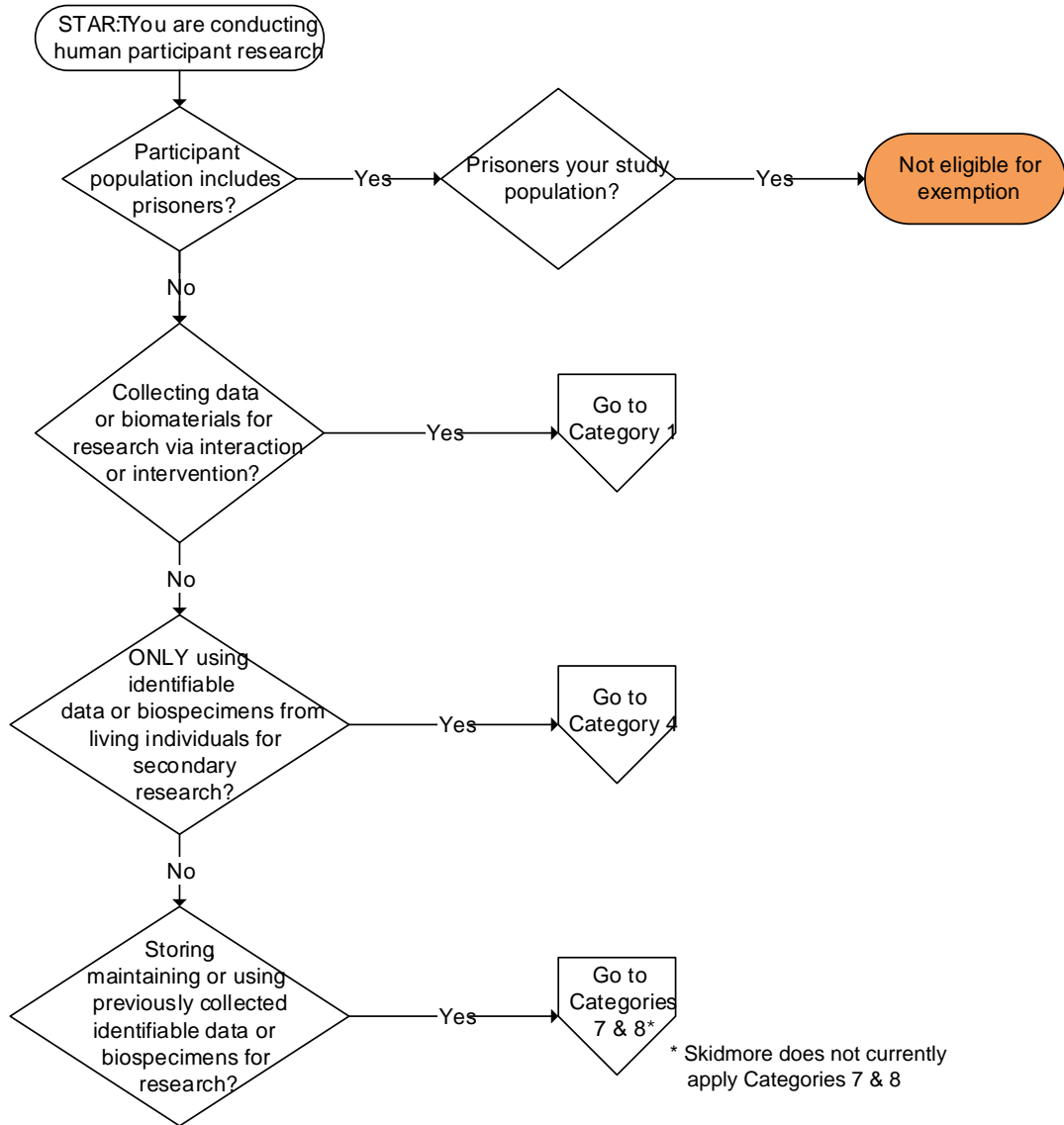


# Exemption Decision Charts For General Guidance

Is Your Human Participant Research Eligible for Exemption?

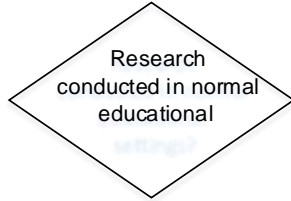


**NOTE:**

1. Researchers may not make a self-determination of exemption from IRB review. All research with human subjects must be reviewed by the Institutional Review Board and either granted an Exemption or Approval before study procedures may begin.
2. In order for the research to be eligible for exemption

# Exemption Decision Charts For General Guidance

Educational practices Does Exemption 1 apply? [45 CFR 16.104(d)(1)]



# Exemption Decision Charts For General Guidance

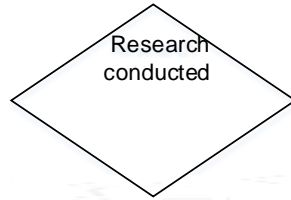


# Exemption Decision Charts For General Guidance

# Exemption Decision Charts For General Guidance

Using IDENTIFIABLE data

# Exemption Decision Charts For General Guidance



# Exemption Decision Charts For General Guidance

## Food and Taste Evaluation Does Exemption 6 apply? [45 CFR 16.104(d)(6)]

