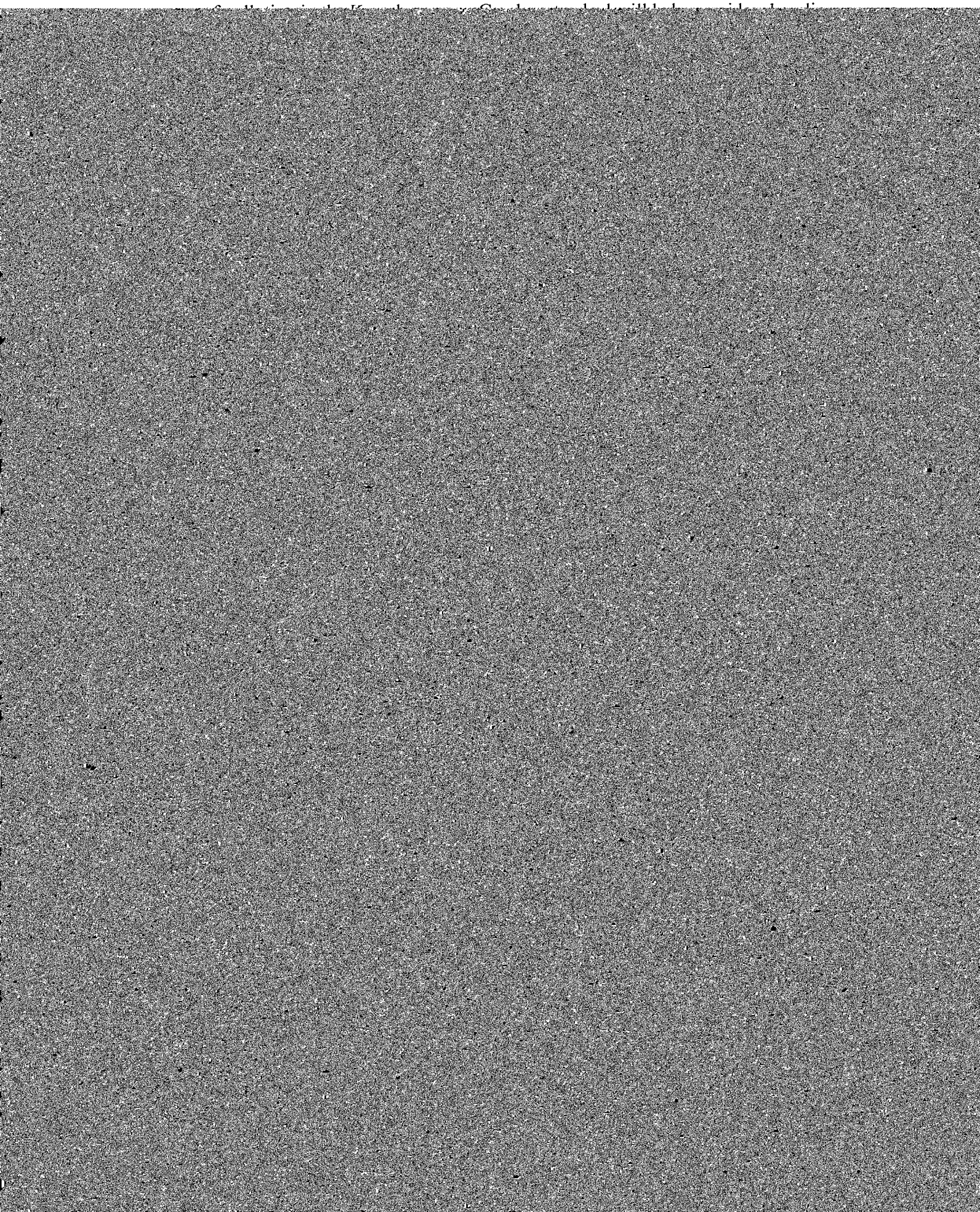
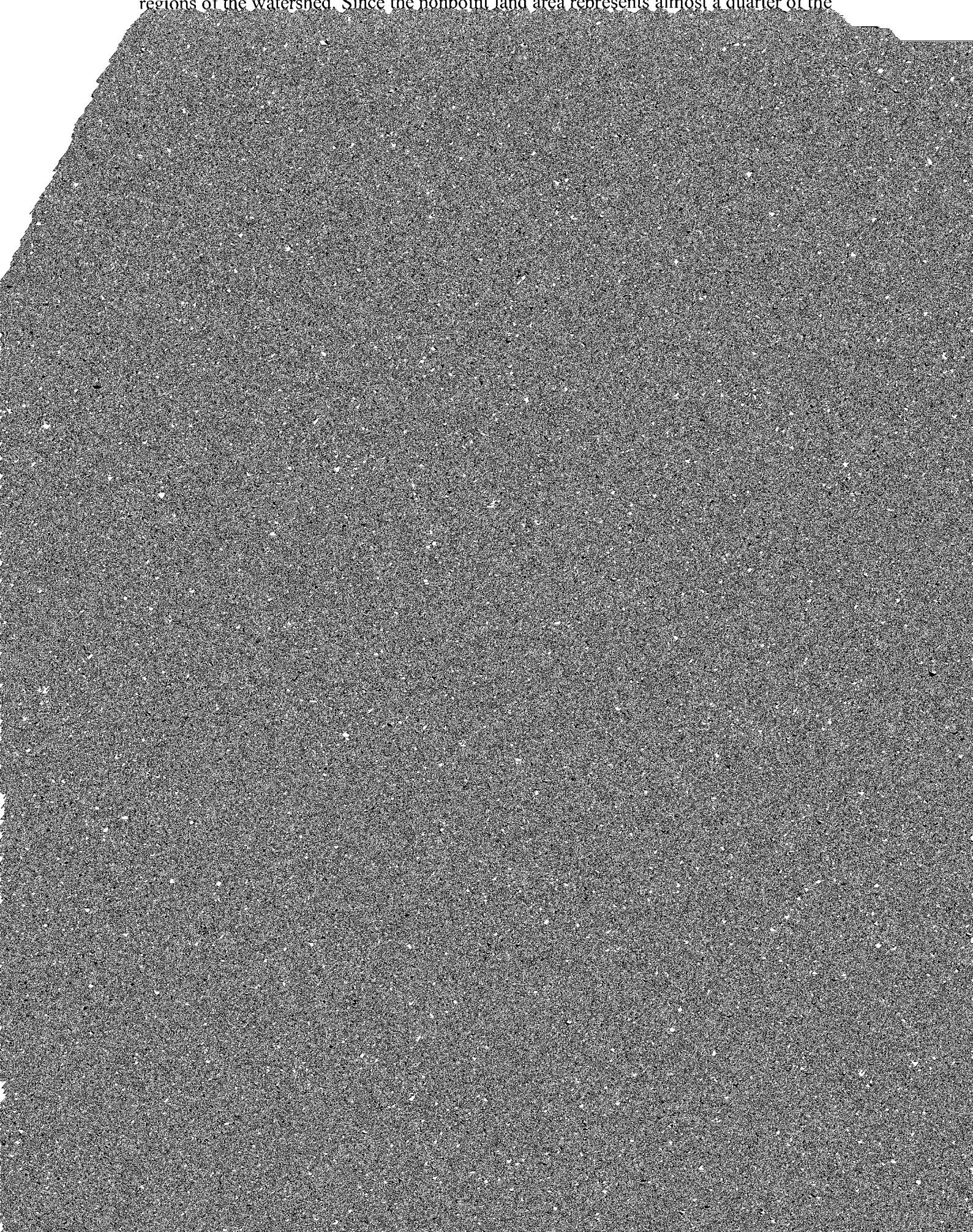


tributary in the form of runoff. Determining the existing areas of possible nonpoint



USDOE facility is situated on grounds of the Kenneth A. Kesselring Reservation, in the

regions of the watershed. Since the nonpoint land area represents almost a quarter of the



References Cited

Cornell University Geospatial Information Repository (CUGIR). 1998. CUGIR Data
Thesis: New York Land Cover & USGS Land Cover Class Definitions

D. I. W. C. I. NYSDCOR. C. W. D. E. U.

C) Urban/Recreational Grasses - Vegetation (primarily grasses) planted in developed areas

8 hereof.

(The above information is classified in accordance with title 8

1. Prior to October first, nineteen hundred ninety-two, no permit shall be required for discharge composed entirely of stormwater, except

particular nonpoint sources which add significant amounts of pollution to each water body identified above.

2. The report prepared pursuant to this section shall be revised by the commissioner in cooperation with the state soil and water conservation committee at least every five years.

S 17-1407. Priority nonpoint source pollution.

From the inventory developed pursuant to section 17-1405 of this title

Appendix C

FINAL EFFLUENT LIMITATIONS AND MONITORING REQUIREMENTS



